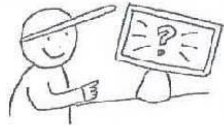


Badge Name:

EVIDENCE

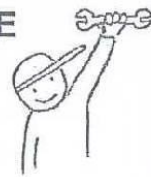
What artefact will show the criteria has been met?



How will you measure completion of your criteria?

SKILLS + KNOWLEDGE

What skills does the badge represent?



What does the badge represent?

What does it show I can do?

BEHAVIOURS

What behaviour does the badge encourage?

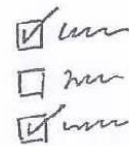


Does the badge encourage certain behaviours?

i.e. increased engagement.

CRITERIA

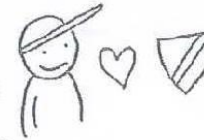
What do you need to do to earn the badge? Does it expire?



What do you have to do for the badge?

VALUE PROPOSITION

Why bother earning the badge? What opportunities does it unlock?



Earners:

Why do they want to earn? How does it benefit them?

Issuers:

Why do they want to give this badge?

Consumers:

What does the badge demonstrate?

ENDORSERS

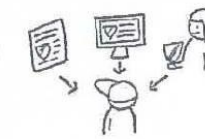
Who supports and recognises your badge?



Working with other institutions?

CHANNELS

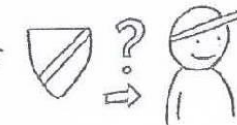
Where does a user find out about your badge?



Social Media?
School/University?

AWARDED

Who awards your badge and how?



Nominations?
Evidence?
Automatic?

USERS

Who is your badge for?



Earners:

Learner?
Educator?
Anyone?

Issuers:

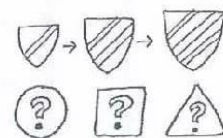
School?
Teacher/Lecturer?
External body?

Consumers:

Parents?
Employers?
Next level of Ed.?

BADGE PATHWAYS

What other badges exist in your eco system? Are there different levels?

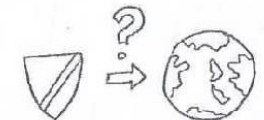


Do you have ~~you~~ to earn other badges before this one?
Does this badge build up to others?

i.e. Individual independent learning skills badges could lead to a 'Independent learner' badge.

RESOURCES + SUSTAINABILITY

What resources are needed for your badge to work? Eg. technology, expertise, money?



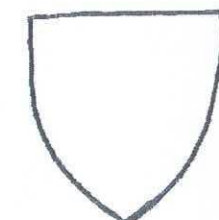
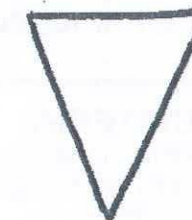
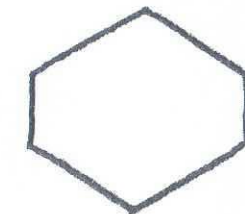
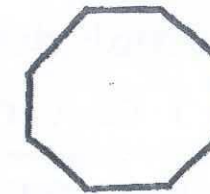
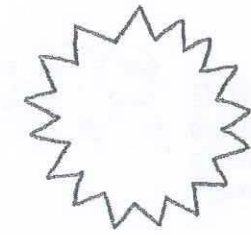
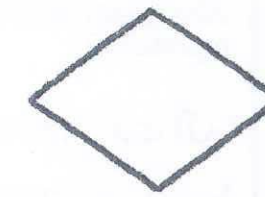
What do you need for your badge to work?

BADGE NAME: _____

Ideas for badge shapes:

BADGE DESIGN

Get creative!



BADGE CRITERIA

Write brief description of your badge

- what it is for?
- who it is for?
- what is done to earn it?

BADGE TAGS

How will people search for your badge?

Eg.

Communication

Coding

Presenting

Tags can be used to group sets of badges and to help people to search for your badges.

