

# Creating a Badge Image

A key aspect of Open Badges is their appearance and it can be hard when you are starting out to know where to begin with designing your own, especially if you don't have access to any graphics packages.

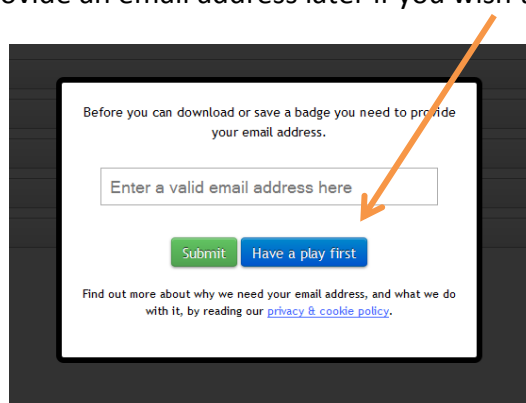
The Open Badge Designer from MyKnowledgeMap (a Mozilla partner) brings together all of the aspects you need to create your own badge image – in a simple and user friendly tool. You can access the designer at:

OpenBadges.me



Select the 'Build a badge!' button to get started.

The service will ask you to provide a valid email address in order to download your finished image – this is in order to link the badge icon to you (as you are likely to be the issuer). If you would just like to experiment with the tool, you can select 'Have a play first'. You will still have the option to provide an email address later if you wish to download your creation.



This is the main window for the Badge Designer:

To see options for each aspect of your badge image, select the associated button – I would advise that you work in the order they are presented (with Shapes first), however, you can always return to a section to update it (e.g. to change colours).



This space will show you a preview of the badge you are creating.

Once you are happy with your image, you can download by selecting here.

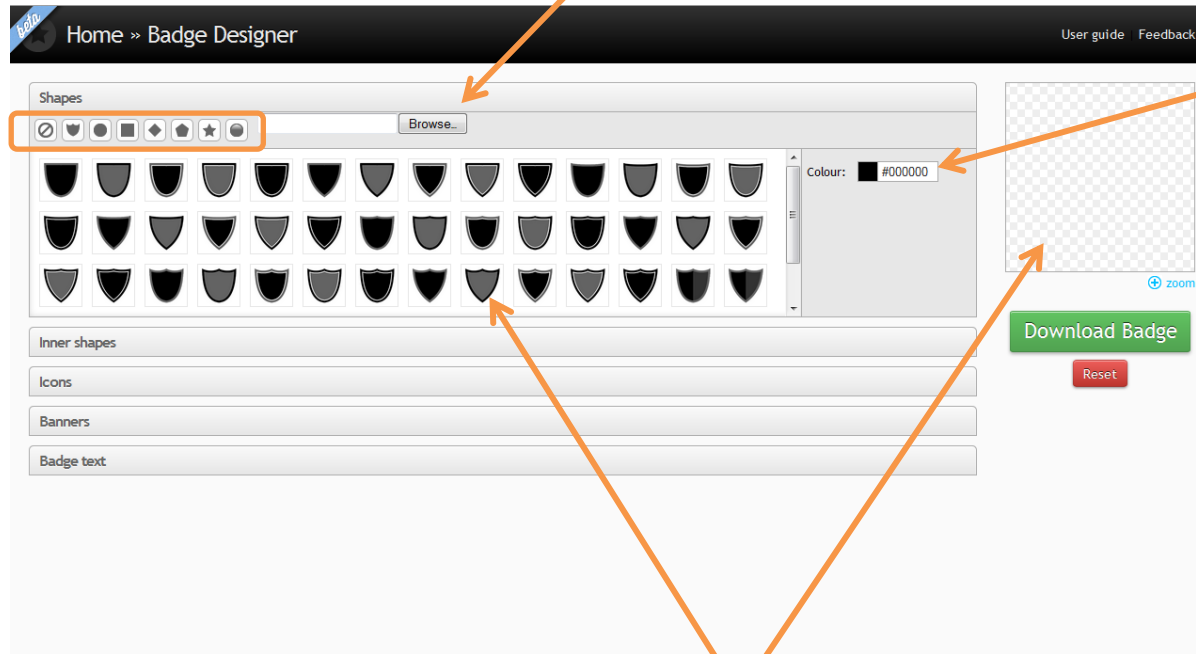
If you would like to start again at any time, select the Reset button.

## Shapes

You can choose from a variety of shape categories:

- Shields
- Circles
- Squares
- Diamonds
- Polygons
- Stars
- Special

If you have a background shape of your own, you can upload this to the designer by selecting 'Browse...'.



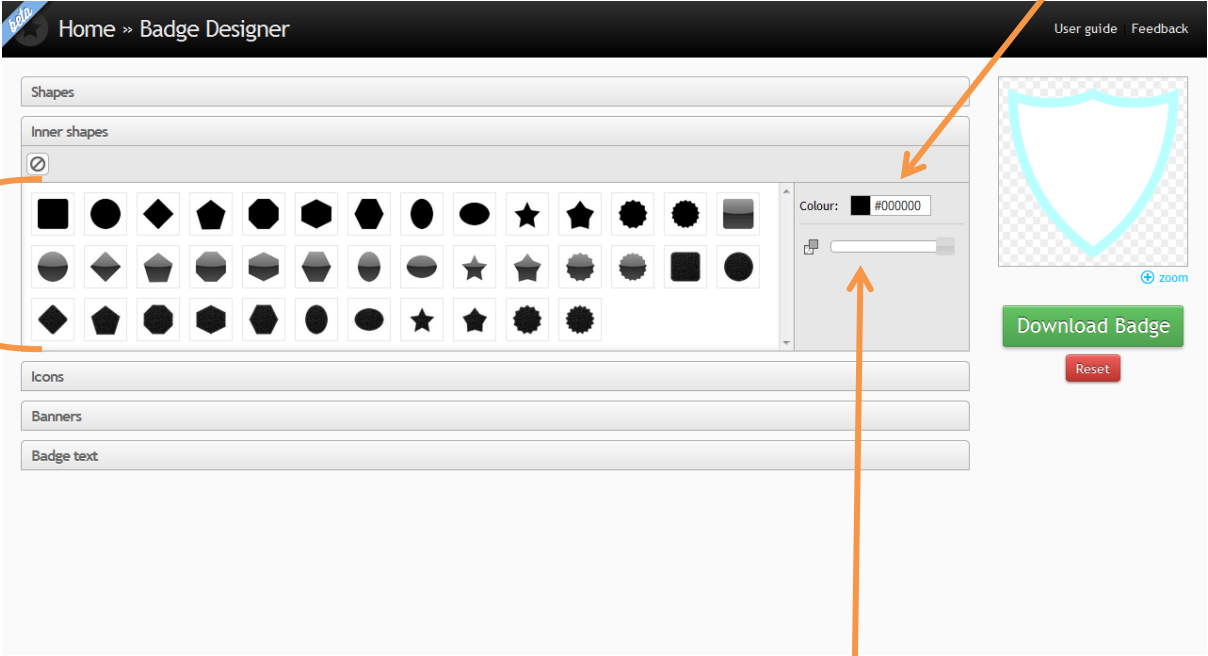
Choose your colour here. See the guide to [Colorpicker.com](http://Colorpicker.com) for extra information on getting the right colours for your badge.

For each category of shapes you will see lots of possible options. Select a shape to make it appear in the preview window.

## Inner Shapes

Shape Options

Select the colour of your inner shape



Control the transparency of your inner shape using this slider.

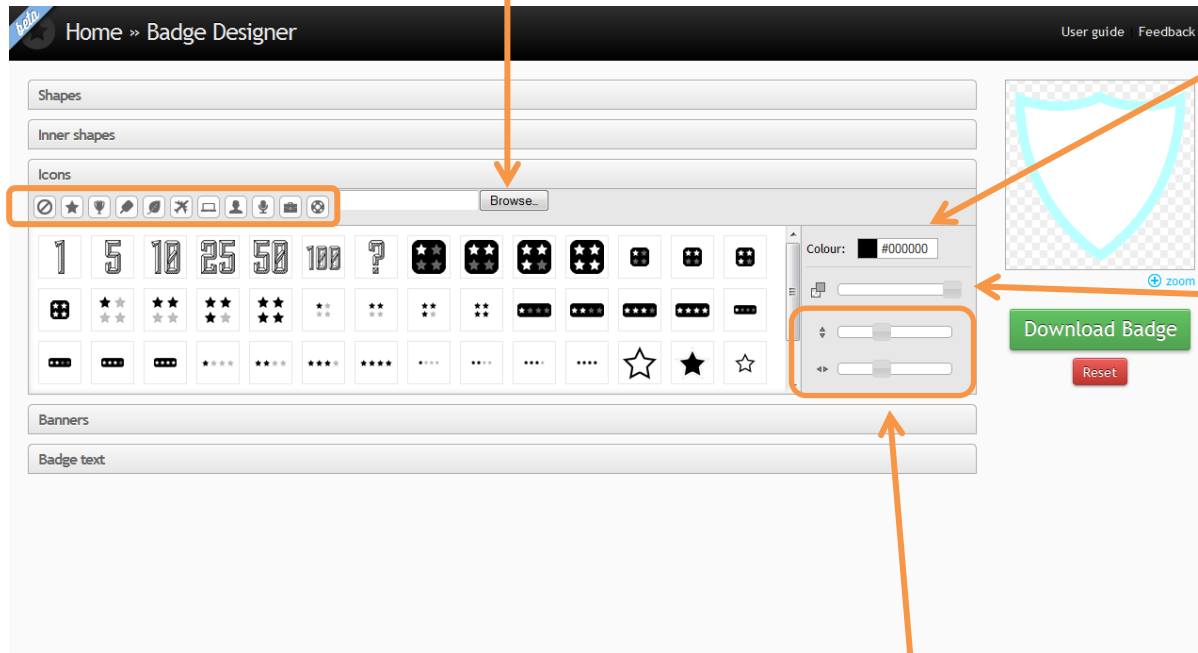
The screenshot shows the 'Badge Designer' interface. At the top, there is a navigation bar with 'Home >> Badge Designer' and 'User guide' and 'Feedback' links. Below this, there are several tabs: 'Shapes', 'Inner shapes', 'Icons', 'Banners', and 'Badge text'. The 'Inner shapes' tab is active, displaying a grid of 30 different black inner shape options. To the right of the grid is a 'Colour' selector with a dropdown menu showing '#000000' and a slider below it. An orange arrow points from the text 'Select the colour of your inner shape' to the colour dropdown. Another orange arrow points from the text 'Control the transparency of your inner shape using this slider.' to the slider. On the far right, there is a preview window showing a shield-shaped badge with a cyan outline and a white inner shape. Below the preview are buttons for 'Download Badge' (green) and 'Reset' (red). A 'zoom' icon is also present near the preview.

# Icons

Add your own icons (such as institutional logos)

Icon Categories:

- Stars
- Medals
- Food
- Nature
- Travel
- Technology
- People
- Audio/Video
- Business
- Other



Choose your colour

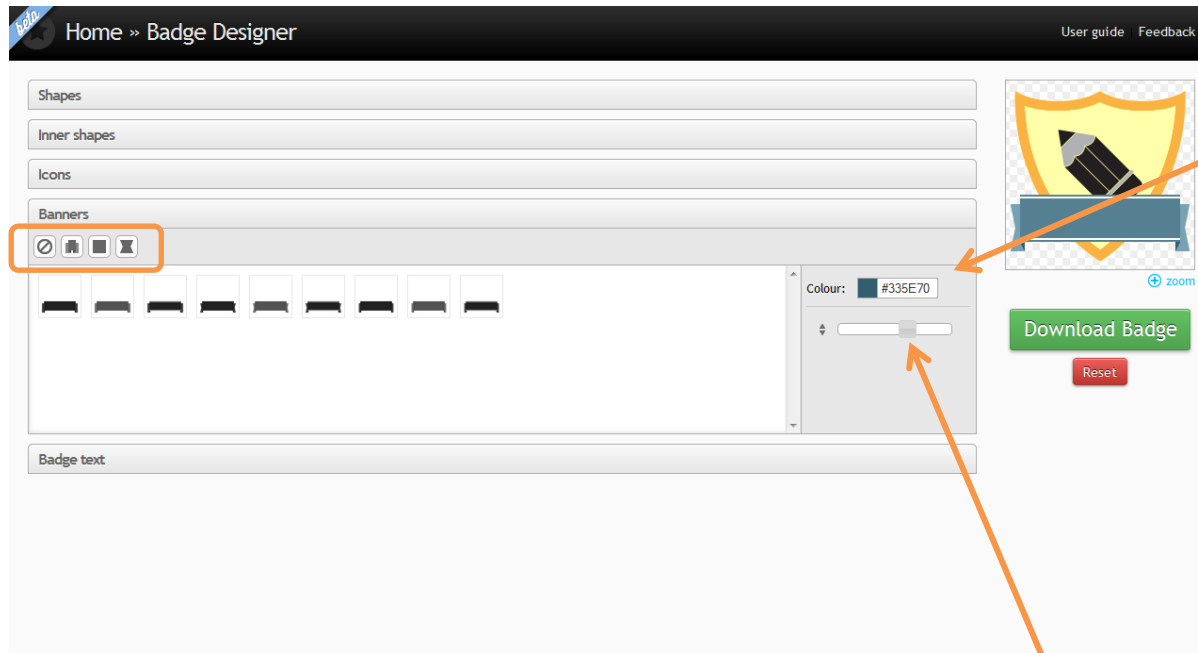
Adjust the transparency of your icon

Adjust the placement of your icon.  
(You can use the keyboard arrows to help you move items with finer control)

# Banners

Banner Categories:

- 3D
- Flat
- Ribbon



Change the colour of your banner

Adjust the position of your banner

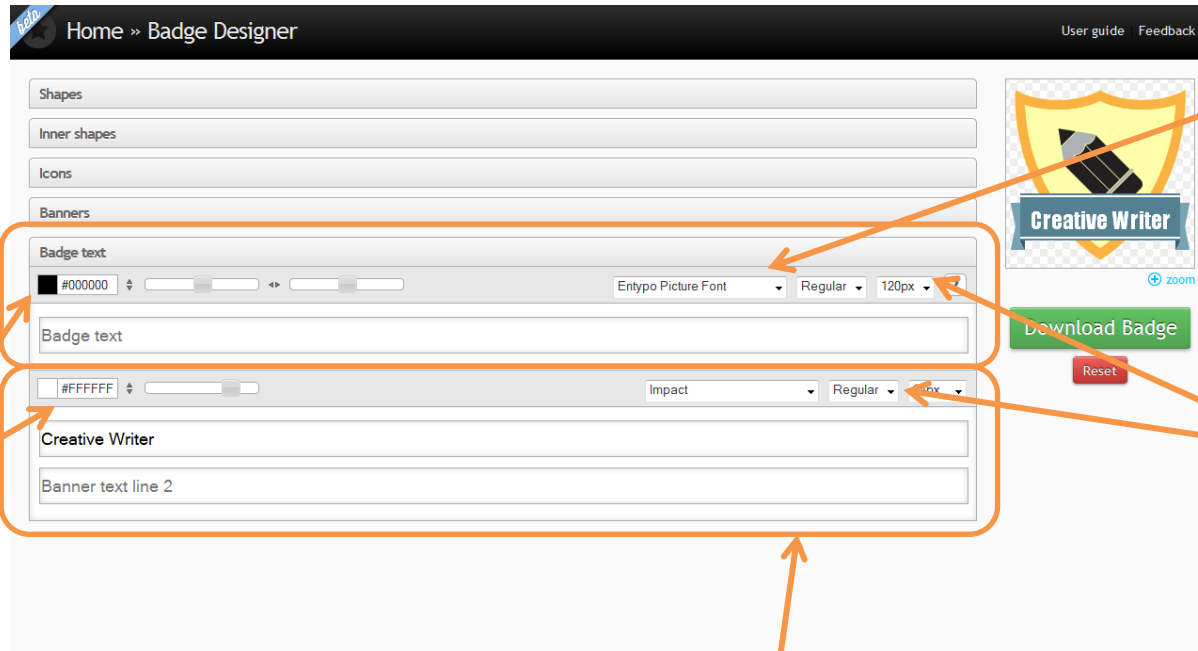
# Text

Badge Text – writes onto badge icon itself.

Adjusting text colour and position

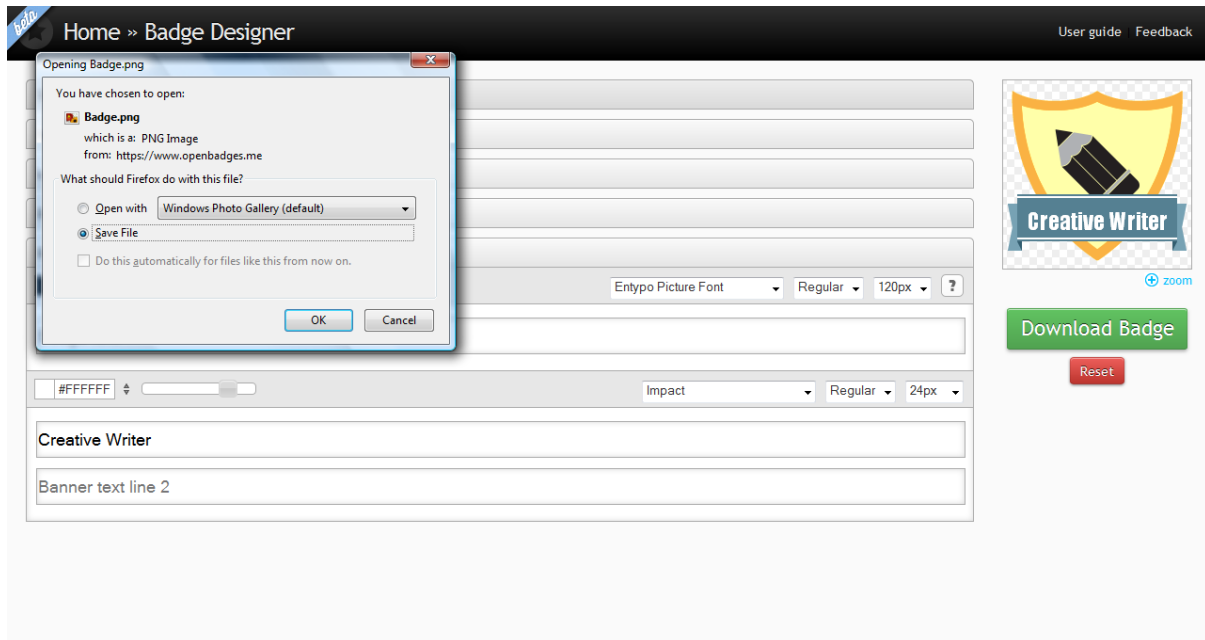
For Badge text – picture fonts can be used to create your own Badge icons.

Changing text font and size



Banner Text – writes specifically onto banner, you can have two lines of text here,

To download your finished badge image, select the 'Download Badge' button (providing your email address at this point if necessary). When the following window opens, select 'Save File' and click the 'OK' button.



Now you have a badge image, you can start creating your own Open Badge!

