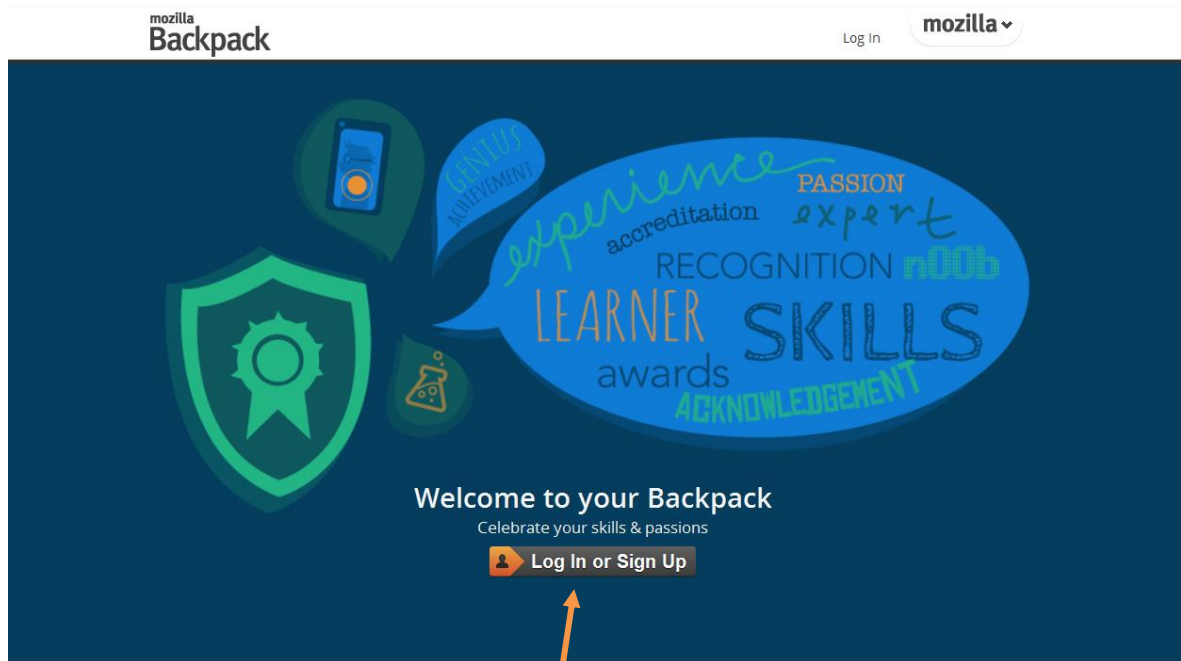


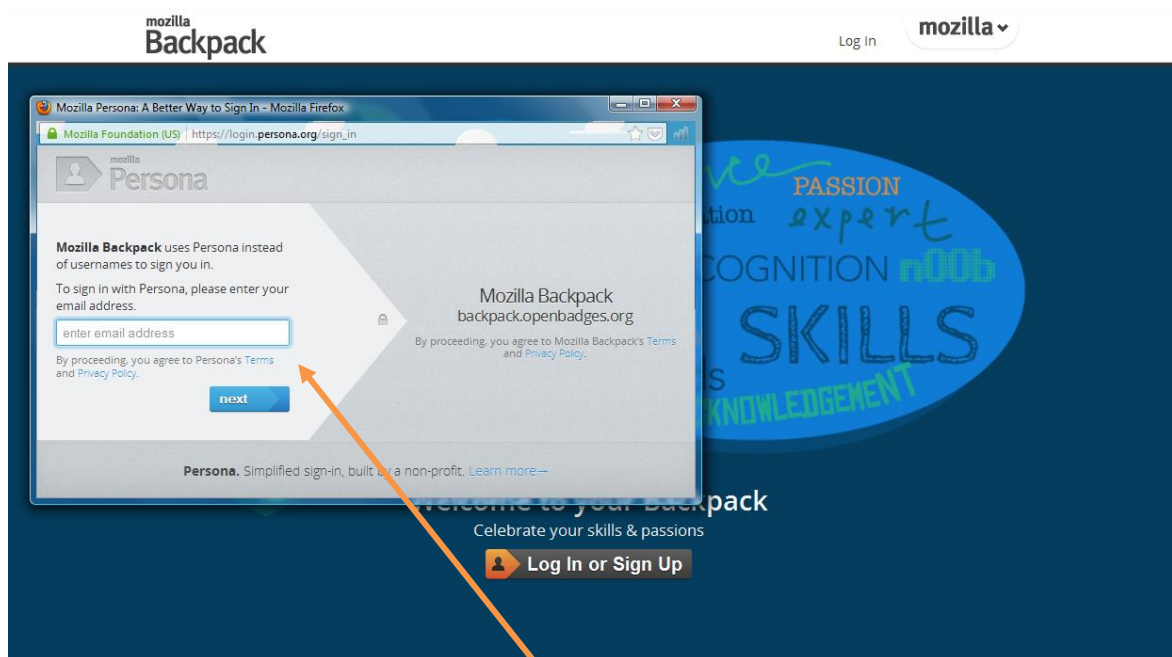
# Signing up for a Mozilla Backpack

The Mozilla Backpack can be accessed at:

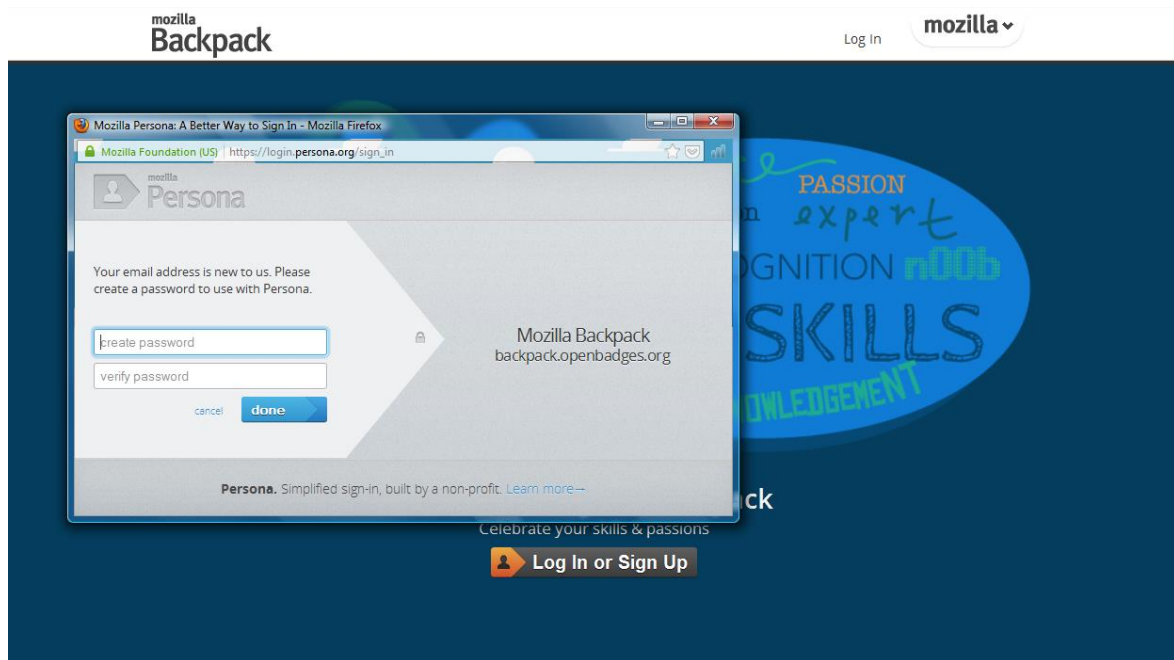
Backpack.openbadges.org



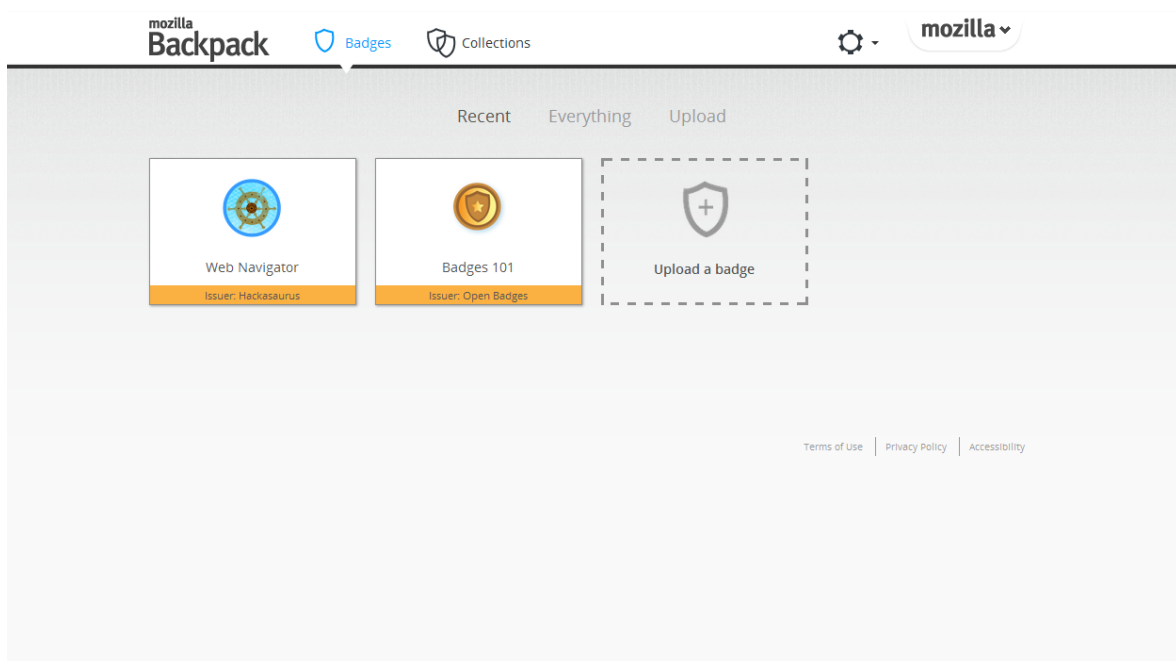
To begin, select the 'Log In or Sign Up' button.



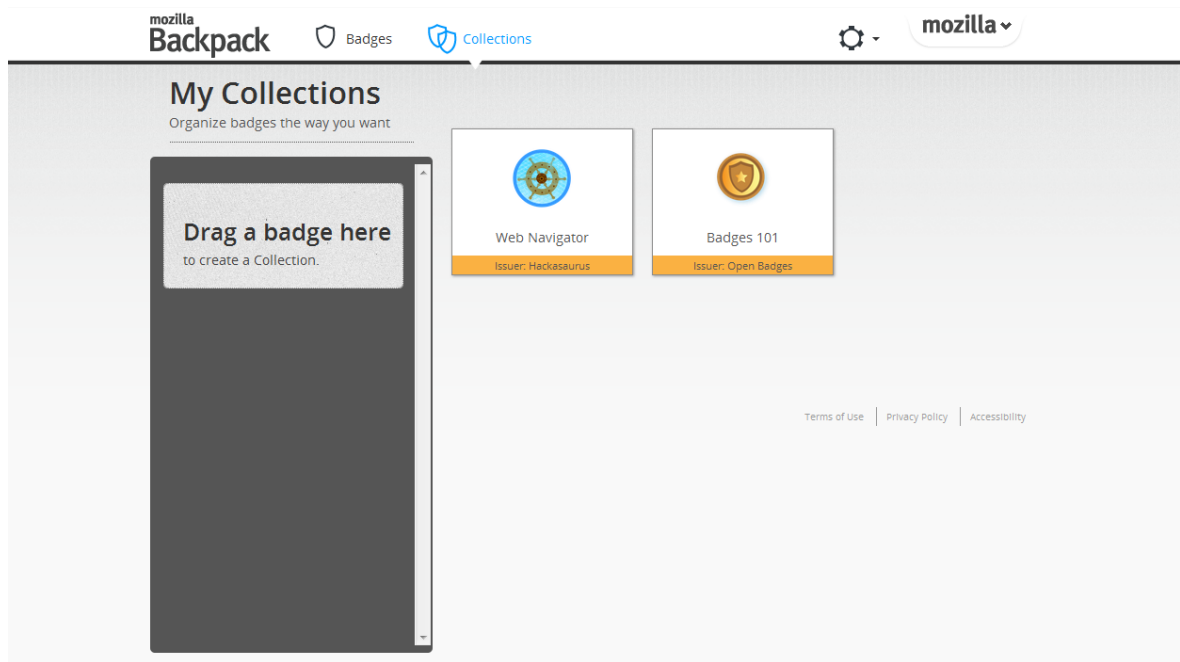
The Backpack uses Mozilla Persona to link your badges to you. To find out if you already have an account with this service simply type your email address into the field.



If you are not already signed up, all you need to do is create a password, click the link on your confirmation email and your account is complete.



There are three possible views in the main Backpack window: Recent, Everything and Upload. Recent and Everything only become different pages once you have earned too many badges to fit on one page. The Upload option allows you to add other badges that you have received, however, a number of badges use the Persona account to push them straight into your backpack, meaning that you will not need to upload them.



In the My Collections view, you can organise your badges into groups. For example, if a learner is earning badges through school and also informally online they may want to have a 'School Collection' and an 'Online Collection' to help them to keep track of what they have achieved in each context.

Now that your Backpack is set up – you can go and earn yourself some badges.

Visit: <http://openbadges.org/quickstart/> to earn your 'Badges 101' badge